

14A

TOTAL AREA
1,241 Square Feet
115 Square Meters

ROOMS
2 Bedrooms
2 Bathrooms

FEATURES

- Soaring 12'6" Ceiling Heights
- Expansive Windows
- Sawn-Cut, White Oak Floors Throughout
- Morris Adjmi-Designed, Locally-Crafted Walnut Kitchen Cabinetry
- Honed Marble Countertops and Oil-Rubbed Bronze Kitchen Fixtures
- Sub-Zero Refrigerator, Wolf Ovens and Gas Cooktop and Under-Counter Wine Cooler
- Custom Millwork Closets
- Honed Marble Countertops and Watermark Bath Fixtures
- Custom, Washed Grey Oak Bath Vanity and 72" Soaking Tub
- Full-Size, Front-Load Washer and Dryer

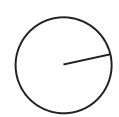
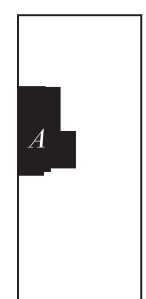
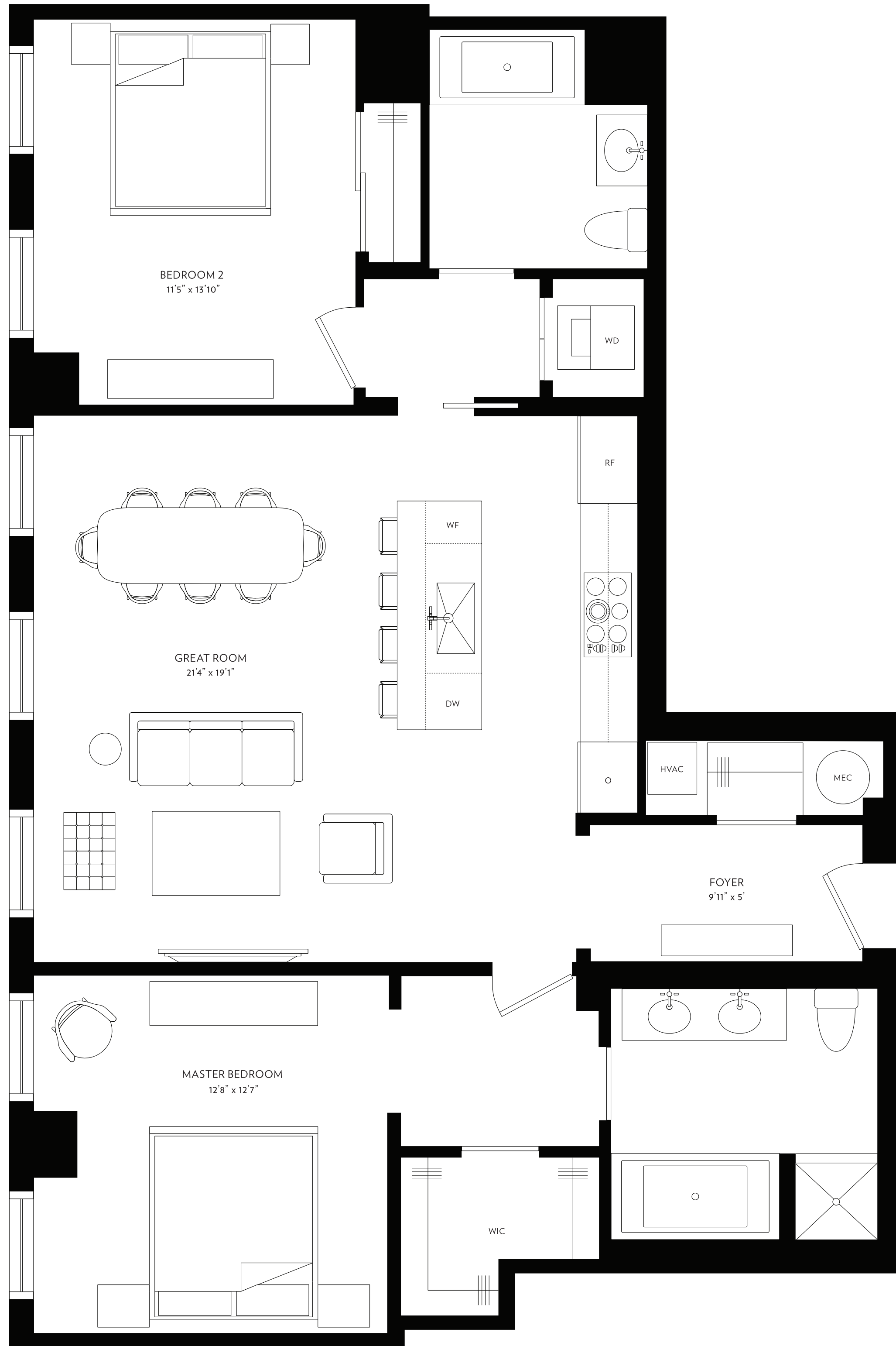
THE STANDARD

AT SOUTH MARKET

1001 Julia Street, New Orleans

SALES GALLERY
719 O'Keefe Avenue
New Orleans, LA 70113
504.517.9500

STANDARDNOLA.COM



EXCLUSIVE SALES & MARKETING LATTER & BLUM

All dimensions are approximate. Plans, floor plans and dimensions are subject to variances and change. This is not a public offering statement. Sponsor makes no representations or warranties except as may be set forth in the public offering statement. Sponsor reserves the right to make changes in accordance with the terms of the public offering statement. The public offering statement may be obtained by contacting the Sponsor of the Standard Condominium development: South Market District B2 LLC c/o The Domain Companies, 643 Magazine Street, Suite 400, New Orleans, LA 70130, 504.301.0014. Latter & Blum Inc. Realtors, 866.794.1022. The complete offering terms are contained in the public offering statement. Equal Housing Opportunity